



**LAUREL**

High Quality

High Durability

High Reliability

High Cost-Performance

**LAUREL**  
www.lbm.co.jp

**K12**  
Fitness Sorter

**LAUREL**  
LAUREL BANK MACHINES CO.,LTD.



**K12**

**Laurel K12 will bring the innovation based on over 40 years of our experience in Bank Note processing.**

**Despite the machine has 12 pockets + 1 reject, the body of K12 has been refined as compact as possible with high speed Bank Note processing.**

**You will experience amazingly high cost performance with our K12.**

**JAPANESE Quality**

Like our other LAUREL product, K12 has gone through our own Quality Examination in order to keep the Quality at high. We now confidently introduce that K12 with JAPANESE quality such as the reliability, the durability, and the accuracy at the highest level to fulfill your demand.

**Highly Selected Components for High Durability**

Through our field assessment and customer feed back, we succeeded to adopt the Highly Selected Components with High Durability in our K12. The Evolution of K12 will never be stopped.

**User-friendly Design**

Comparing with other sorting machines with 12 pockets, we assure that K12 is physically the smallest Note Sorting Machine with 12 pockets. Due to the efficient size of K12, one operator will be enough to control the machine. In addition, the hopper position has been set up at almost the surface of the desk. This is also because of our User Friendly Concept on K12.

**Reliable Fitness and Authenticating Detection**

The K12 is equipped with the high-tech Validator JDU-62, which is the result of LAUREL's long experience in cash handling. The K12 meets ECB standards of the Banknote Recycling Framework. Its Fitness Detection functions sort out taped, soiled, dog-eared and poor-quality banknotes from clean notes. In addition, fitness settings can easily be changed to meet specific needs and requirements. The K12 is equipped with newly-developed IR/MG/MT sensors, enhancing Authenticating (CF) Detection.

**High Productivity and Cost-performance**

The K12 boast a counting speed of 900 notes/min. and will significantly improve operation efficiency in your daily cash-handling work. The high productivity and the functionality of K12 will meet your requests and solve your problems.

**Customizing Sorting Modes**

The K12 sorting modes include Denomination, Fitness, ATM-fit, Face & Orientation and Issue sorting. The wide range of functions will meet customer needs. As your need arise, the combination of the Sorting Mode can be customized in each denomination.

**Easy Operation**

Operating the K12 is as simple as turning on the Power Switch, selecting the Mode, and setting the banknotes onto the Hopper. Initializing process is remarkably fast.



In addition, the New Color Touch Screen enables the operator to verify each operation and to observe more information.

**Large capacity Hopper**

The K12 will enhance productivity with the Hopper whose capacity is max. 1000 notes. The Note Press presses down on the pile of notes to assist the feeding of notes to avoid jamming and rejects.



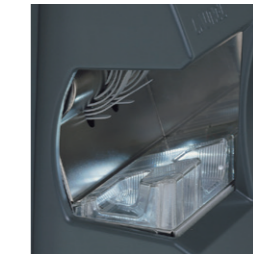
**Sorting Stacker**

Each stacker is equipped with LED illumination to indicate a full Stacker and a display where the number and type of banknotes are indicated by different colors. The operator will know immediately which Stacker is full and what type of banknote is being sent to which Stacker.

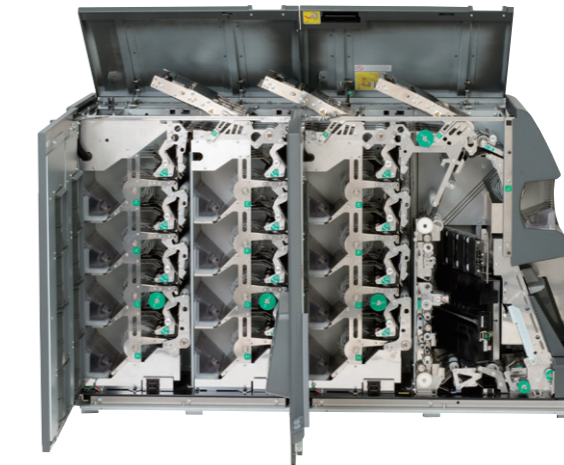


**Large Capacity Reject Stacker**

The K12 will improve efficiency thanks to a Reject Stacker with a capacity of 200 notes. The condition of the Reject Stacker is indicated by an LED illumination for the operator to perceive whether it is full or a banknote remaining.



**Easy Maintenance**



The K12 is equipped with the self-cleaning function of sensors and requires minimal maintenance to maintain high performance over a long period of time.

The transportation path can be opened widely for easy access to the banknote path, which helps facilitate maintenance and handling of jammed notes.

The machines are equipped with Dust Trays to facilitate daily maintenance.

**Easy Software Update**

The software updating on the K12 is simple, enabling long-term use of the machine.

**MCS Function (Multiple Currency Select)**

Max. 4 currencies can be programmed depending on the demand of the customers. New denomination (if newly issued) can be easily updated.

**Environmental Harmony**

Despite its high performance, the K12 has cut down on power consumption and is designed for recycling efficiency. It complies with the RoHS regulations. We at LAUREL work to develop products that are friendly to the environment.

**After-Sales Service**

A worldwide network of "LAUREL" authorized distributors assures you of professional support and after-sales service.

**Options**

- Customer Display
- OSD-1 (On Screen Display for CCTV)
- Printer
- RS-232C
- LAN



OSD-1



Customer Display

SPECIFICATIONS		K12
Sorting Modes	Denomination, Fitness, ATM-fit, Face, Orientation, Issue	
Dimensions H × W × D	730 × 1222 × 416mm	
Weight	Approx. 185kg	
Counting Speed	Max. 900 notes / minute	
Hopper Capacity	Max. 1000 notes	
Stacker Capacity	Max. 250 notes	
Stacking Method	12 Stacker Wheels	
Display	Color Touch Screen Display	
Power Source	100 – 125 V / 200 – 240 V ~ 50 / 60 Hz	

All data contained in this leaflet are subject to change without notice.  
©2013 LAUREL BANK MACHINES CO., LTD. ALL rights reserved.  
Printed in Japan Rev. A